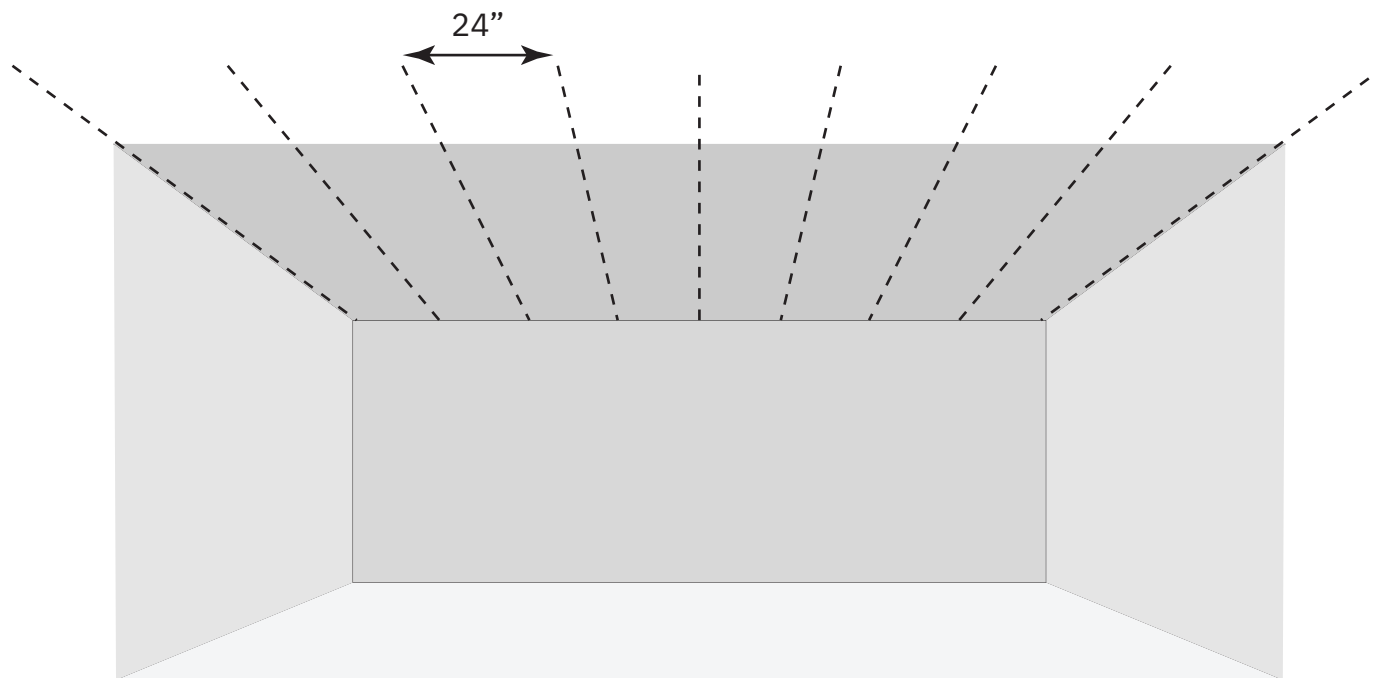


4.



## Tools

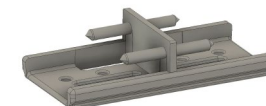
- Drill or Phillips screwdriver
- Tape measure

## Hardware

- Perimeter spear clips



- Internal spear clips



- Screws (not provided)
- Spacers

## Instructions

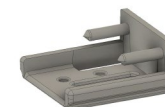
1. Prior to installation please check and verify that all required components have been received. Make sure to have enough hardware to complete the job — supplied and not supplied.
2. Use a clean sawhorse to rest your planks on during installation.
3. Aoudi planks will start from one wall and end at the opposite wall. Select your starting wall.
4. Install 1x4 furring strips on 2' centers perpendicularly to the planned direction of the planks. An additional furring strip may be needed if the distance of the final furring strip to the wall is greater than 2'.

## Tools

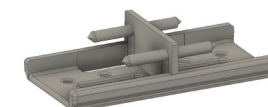
- Drill or Phillips screwdriver
- Tape measure

## Hardware

- Perimeter spear clips



- Internal spear clips



- Screws (not provided)
- Spacers



## Instructions

5. Install perimeter spear clips on to furring strips, against the starting wall.
6. Preinstall internal clips on plank edge facing you. Do not install an internal clip at the end of a plank until the adjacent plank has been installed.
7. Place a spacer on the butt-end that will be against the side wall and place the plank flat onto the perimeter clip's runway. Press plank firmly into spears, making sure your plank is flush against your starting wall.
8. Install planks along the entirety of the starting wall. Planks will share clips equally at the ends of the planks. Use spacers in between each plank as you go (butt-ends only).

## Tools

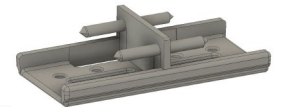
- Drill or Phillips screwdriver
- Tape measure

## Hardware

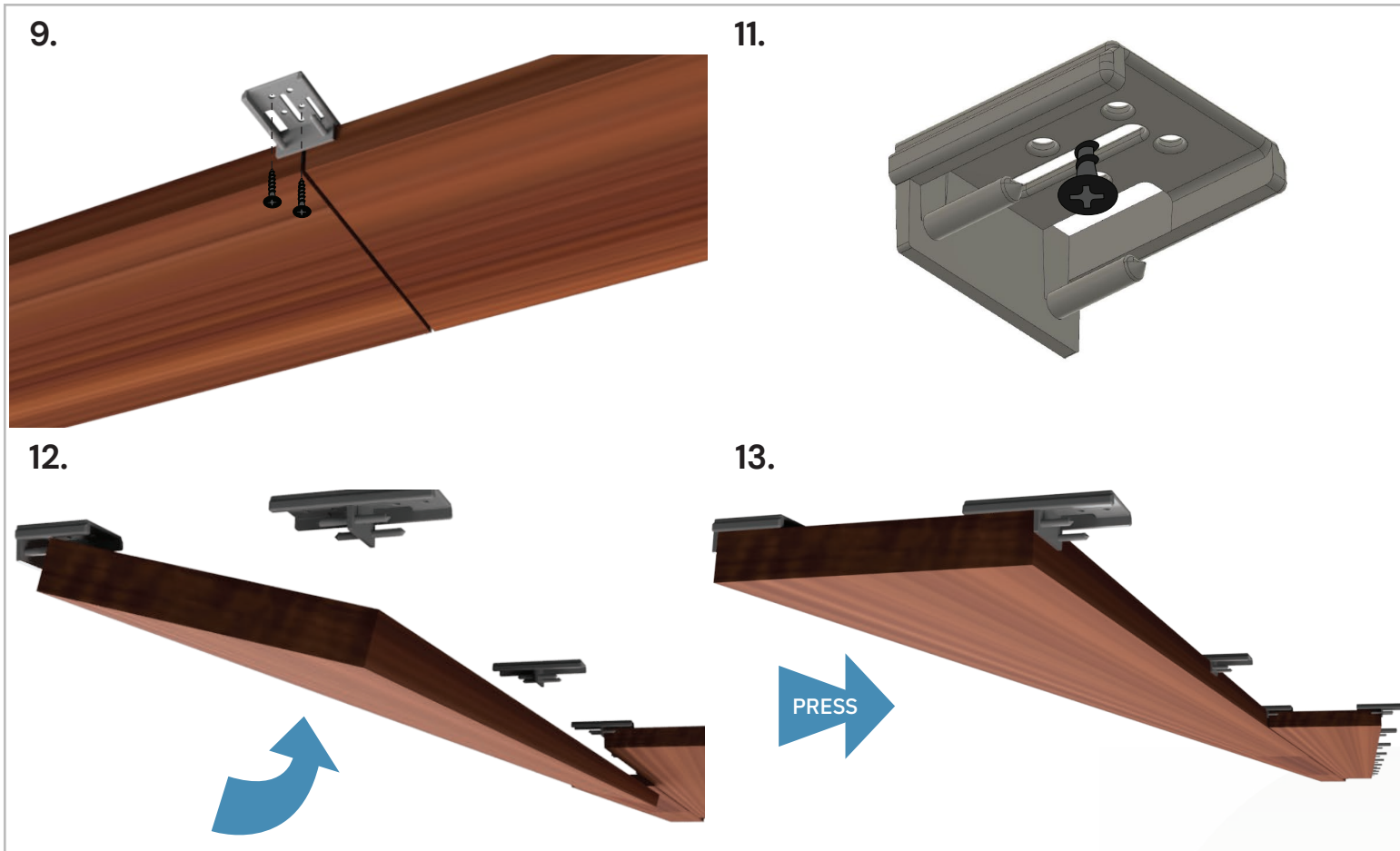
- Perimeter spear clips



- Internal spear clips



- Screws (not provided)
- Spacers



## Instructions

9. Screw internal clips onto furring strips as you go, plank by plank—do not torque down fully. Now slide in internal clips that join planks together. Screw joining internal clips down. Tighten all remaining clips on that row.
10. Install remaining rows of planks until you reach the last row to be installed.
11. Install perimeter clips onto furring strip against the finishing wall through the channel in the center of the clip's runway. Leave the screw loose enough to slide the perimeter clip.
12. Press the plank at an angle against the perimeter clip's runway, then pivot board up to the ceiling, and slide into the clip's spears.
13. Slide the entire plank into the previously installed internal clips.



## Tools

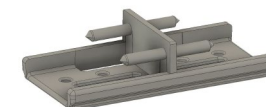
- Drill or Phillips screwdriver
- Tape measure

## Hardware

- Perimeter spear clips



- Internal spear clips



- Screws (not provided)
- Spacers

## Instructions

### Notes:

1. Preinstall internal clips prior to lifting to ceiling
2. Field-cutting and edge-banding may be required for spaces not divisible by the planks width and length. Please see Sonus document "Field-cutting and edge-banding guide."
3. Perimeter trim may be desired to finish the room and prevent any unnecessary edge reveals.
4. If you run out of perimeter clips, you can cut an internal clip using a mitre or radial saw.